

4H and FFA
Retail Cuts, Codes and Cookery Method
New 2012



Beef Brisket Corned Moist – BB89M



Beef Brisket Flat Half, Bnls. Moist – BB15M



Beef Brisket Whole, Bnls Moist – BB10M



Beef Chuck 7-Bone Post Roast Moist – BC26M



Beef Chuck Arm Pot-Roast

Moist – BC03M



Beef Chuck Arm Pot-Roast Bnls

Moist - BC04M



Beef Chuck Blade Roast Moist – BC06M



Beef Chuck Eye Roast, Bnls – Dry/Moist – BC13D/M



Beef Chuck Eye Steak, Bnls Dry – BC45D



Beef Chuck Mock Tender Roast Moist – BC20M



Beef Chuck Mock Tender Steak

Moist – BC48M



Beef Chuck Petite Dry – BC21D



Beef Chuck Shoulder Post Roast Bnls Dry/Moist – BC29D/M



Beef Chuck Top Blade Steak (Flat Iron) Dry – BC58D



Beef Flank Flank Steak Dry/Moist – BD47DM



Beef Loin Porterhouse Steak Dry – BF49D



Beef Loin T-Bone Steak Dry – BF55D



Beef Loin Tenderloin Roast Dry – BF34D



Beef Loin Tenderloin Steak Dry – BF56D



Beef Loin Top Loin Steak Dry – BF59D



Beef Loin Top Loin Steak Bnls Dry – BF60D



Beef Loin Top Sirloin Cap Steak, Bnls Dry – BF64D



Beef Loin Top Sirloin Steak, Bnls Cap Off Dry – BF63D



Beef Loin Top Sirloin Steak, Bnls Dry – BF62



Beef Loin Tri Tip Roast Dry – BF40D



Beef Plate Short Ribs

Moist – BG28M



Beef Plate Skirt Steak, Bnls Dry/Moist – BG54D/M



Beef Rib Rib Roast

Dry – BH22D



Beef Rib Ribeye Roast, Bnls. Dry – BH13D



Beef Ribeye Steak, Bnls Dry – BH45D



Beef Ribeye Steak, Lip-On Dry – BH50D



Beef Round Bottom Round Roast Dry/ Moist – BI08D/M



Beef Round Bottom Round Rump Roast Dry/Moist – BI09D/M



Beef Round Bottom Round Steak

Moist – BI43M



Beef Round Eye Round Roast Dry/Moist - BI14D/M



Beef Round Eye Round Steak

Dry/Moist – BI46D/M



Beef Round Round Steak

Moist – BI51M



Beef Round Round Steak, Bnls. Moist – BI52M



Beef Round Tip Roast – Cap Off Dry/Moist – BI36D/M



Beef Round Tip Steak – Cap Off Dry – BI57D



Beef Round Top Round Roast Dry – BI39D



Beef Round Top Round Steak Dry – BI61D



Beef Various Beef for Stew Moist – BN82M



Beef Various Cubed Steak Dry/Moist – BN83D/M



Beef Various Ground Beef Dry – BN84D



Pork Ham/Leg Fresh Ham Center Slice Dry/Moist – PE44D/M



Pork Ham/Leg Fresh Ham Rump Portion Dry/Moist – PE25D/M



Pork Ham/Leg Fresh Ham Shank Portion Dry/Moist – PE27D/M



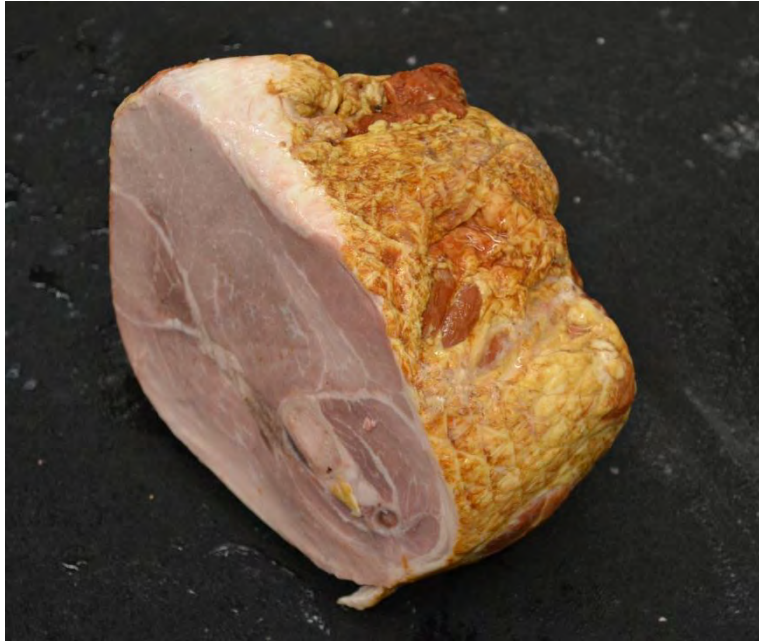
Pork Ham/Leg Smoked Ham, Bnls. Dry – PE91D



Pork Ham/Leg Smoked Ham, Center Slice Dry – PE90D



Pork Ham/Leg, Smoked Ham Rump Portion PE96D



Pork Ham/Leg Smoked Ham Shank Portion Dry – PE97D



Pork Ham/Leg Tip Roast, Bnls. Dry – PE35D



Pork Ham/Leg Top roast, Bnls PE38D



Pork Loin Back Ribs

Dry/Moist – PF05d/M



Pork Loin Blade Chops Dry/Moist – PF66D/M



Pork Loin Blade Chops, Bnls. Dry/Moist – Pf67d/M



Pork Loin Blade Roast

Dry/Moist – PF06D/M



Pork Loin Butterflied Chops, Bnls. Dry – PF68D



Pork Loin Center Loin Roast Dry – PF11D



Pork Loin Center Rib Roast Dry – PF12D



Pork Loin Country Style Ribs

Dry/Moist – PF69D/m



Pork Loin Loin Chops Dry – PF70D



Pork Loin Rib Chops Dry – PF71D



Pork Loin Sirloin Chops Dry – PF73D



Pork Loin Sirloin Cutlets

Dry – PF53D

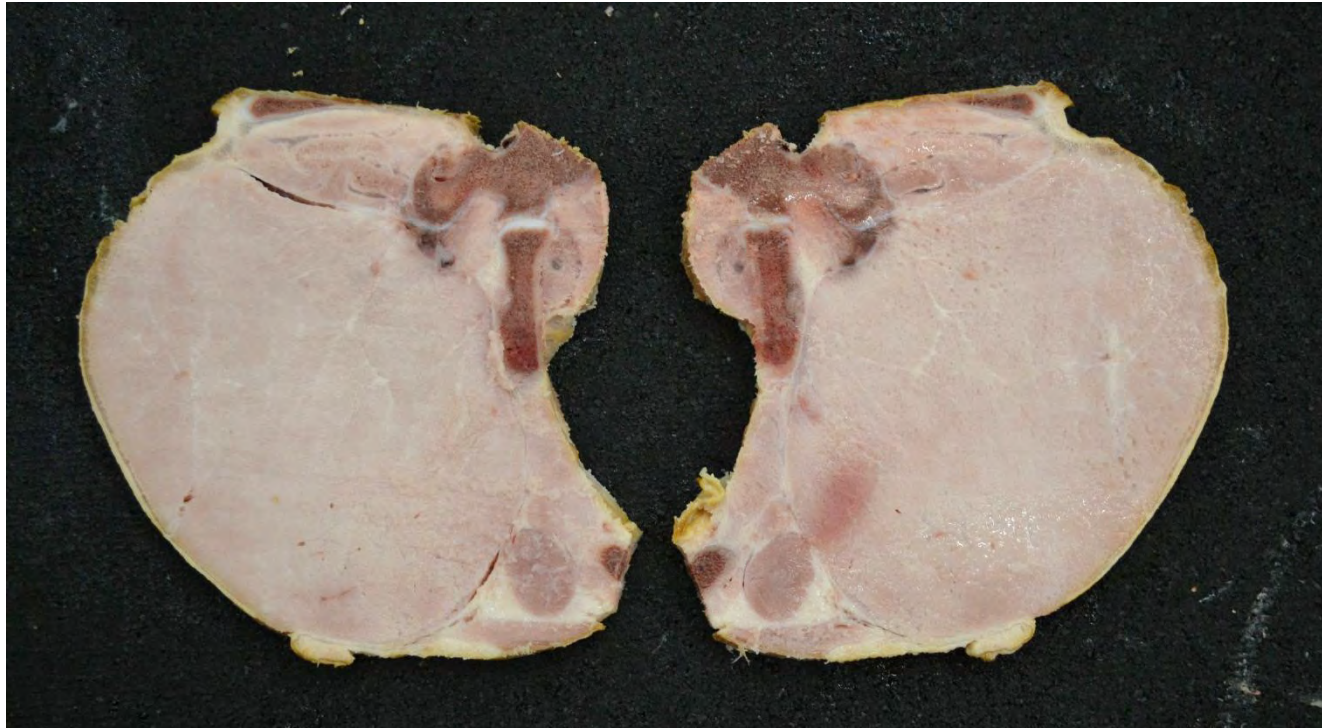


Pork Loin Sirloin Roast

Dry – PF30D



Pork Loin Smoked Pork Loin Chop Dry – PF93D



Pork Loin Smoked Pork Loin Rib Chop Dry – PF95D



Pork Loin tenderloin, Whole Dry – PF34D



Pork Loin Top Loin Chop Dry – PF74D



Pork Loin Top Loin Chops, Bnls. Dry – PF75D



Pork Loin Roast, Bnls Dry – PF37D



Pork Shoulder Arm Picnic, Whole Dry/Moist – PJ02D/M



Pork Shoulder Arm Roast

Dry/Moist – PJ03D/M



Pork Shoulder Arm Steak

Dry/Moist - PJ41D/M



Pork Shoulder Blade Boston Roast Dry/Moist – PJ07D/M



Pork Shoulder Blade Steak

Dry/Moist - PJ42D/M



Pork Shoulder Smoked Picnic, Whole Dry/Moist – PJ94D/M



Pork Side Slab Bacon Dry – PK98D



Pork Side Sliced Bacon Dry – PK99D



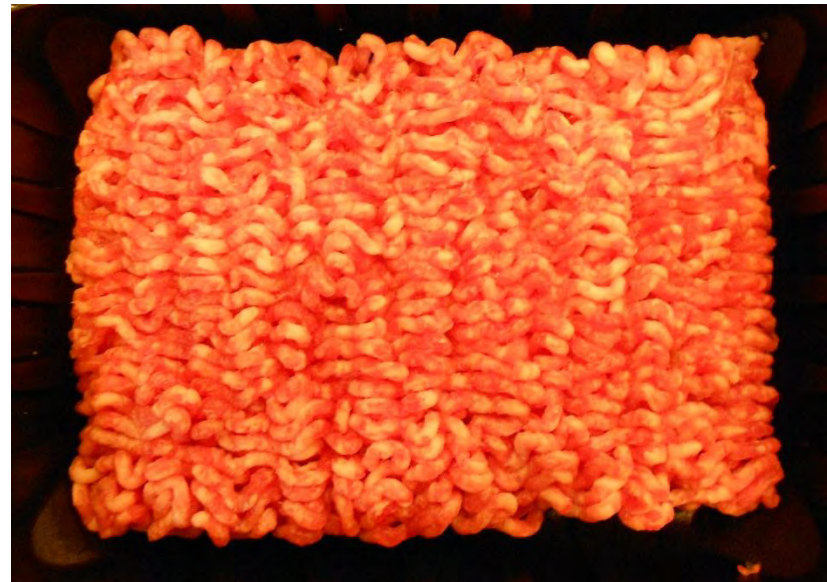
Pork Side Fresh Side Moist – PK17M



Pork Spareribs Pork Spareribs Dry/Moist – PL32D/M



Pork Various Ground Pork Dry – PN85D



Pork Various Hock Moist – PN83D/M



Pork Various Pork Cubed Steak Dry/Moist – PN83D/M



Pork Various Pork Sausage Links Dry – PN87D



Pork Various Sausage Dry – PN88D



Pork Various Smoked Pork Hocks

Moist – PN92M



Lamb Breast Ribs (Denver Style) Dry/Moist – LA24D/M



Lamb Leg American Style Roast Dry – LE01D



Lamb Leg Center Slice Dry - LE44D



Lamb Leg Frenched Style Roast Dry – LE16D



Lamb Leg Leg Roast, Bnls. Dry – LE18D



Lamb Leg Sirloin Chops

Dry – LE73D



Lamb Leg Sirloin Half Dry – LE31D



Lamb Loin Loin Chops Dry – LF70D



Lamb Loin Loin Roast Dry LF19D



Lamb Rib Rib Chops Dry – LH71D



Lamb Rib Rib Chops Frenched Dry – LH23D



Lamb Rib Rib Roast Dry – LH22D



Lamb Rib Rib Roast, Frenched Dry – LH23D



Lamb Shoulder Arm Chops

Dry/Moist – LJ65D/M



Lamb Shoulder Blade Chops Dry/Moist – LJ66D/M



Lamb Shoulder Square Cut Dry/Moist – LJ33D/M



Lamb Various Shank

Moist – LN88M



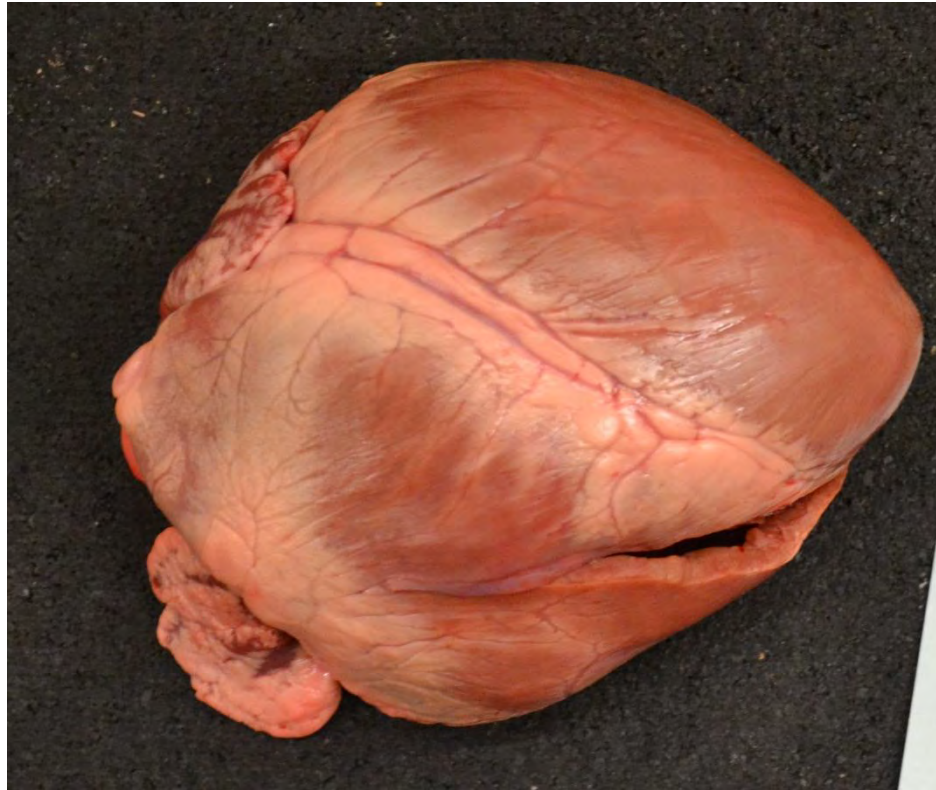
Beef Variety Heart Dry/Moist – BM76D/M



Lamb Variety Heart Dry/Moist – LM76D/M



Pork Variety Heart Dry/Moist – PM76D/M



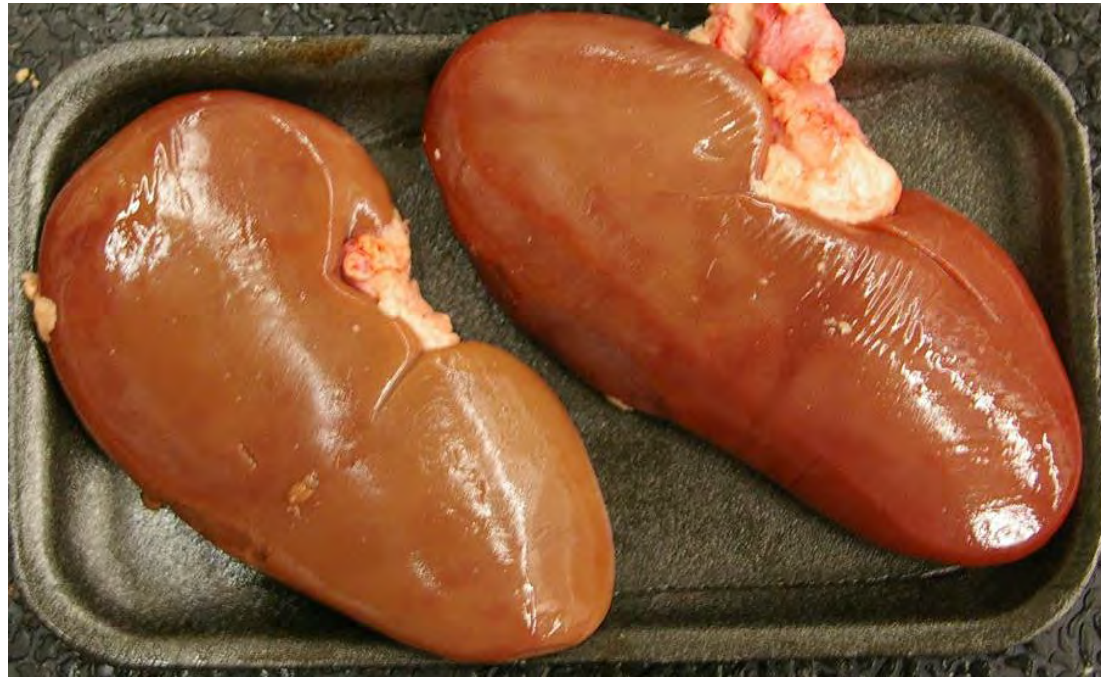
Beef Variety Kidney Dry/Moist BM77D/M



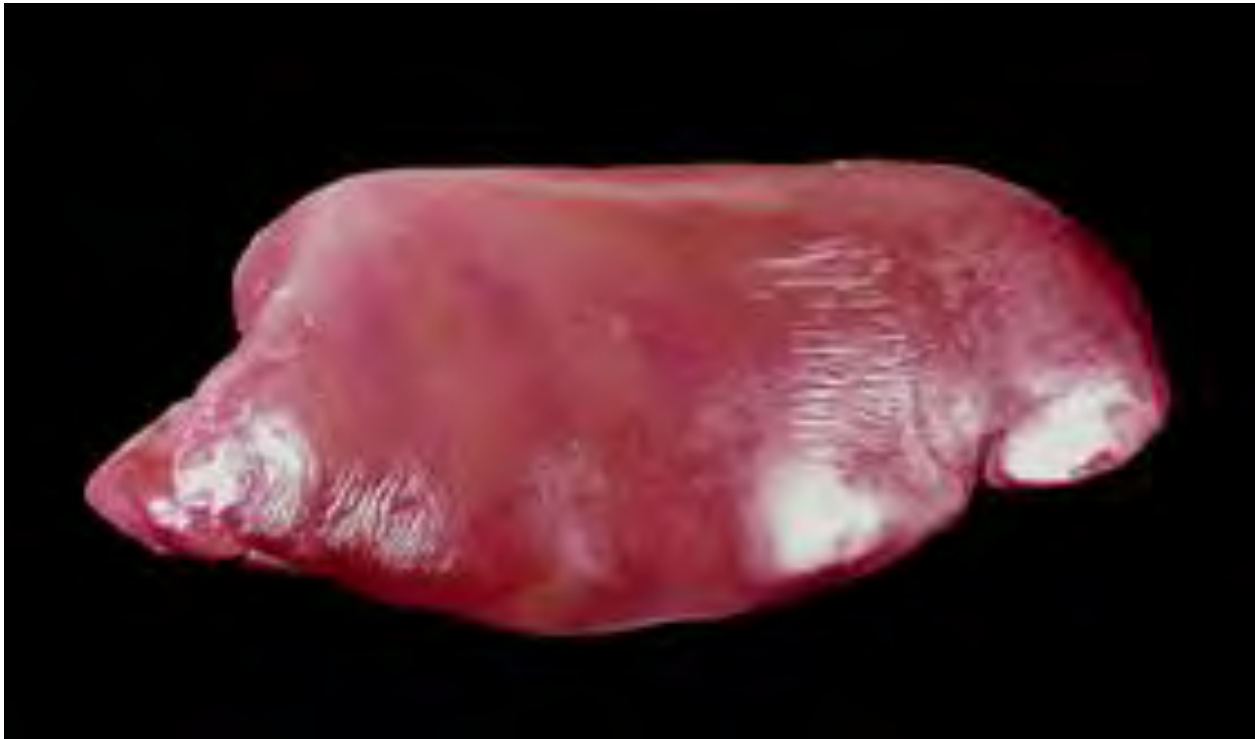
Lamb Variety Kidney Dry/Moist LM77D/M



Pork Variety Kidney Dry/Moist PM77D/M



Beef Variety Liver Dry/Moist - BM76D/M



Lamb Variety Liver Dry/Moist – LM78D/M



Pork Variety Liver Dry/Moist – PM78D/M



Beef Variety Oxtail Moist – BM79M



Beef Variety Tongue Dry/Moist – BM80D/M



Lamb Variety Tongue Dry/Moist – LM80D/M



Pork Variety Tongue

Dry/Moist – PM80D/M



Beef Variety Tripe Moist – BM81M

