

Retail ID

2001

Larry Eubanks

BEEF RIB STEAK, SMALL END



BEEF ARM POT ROAST



BEEF BRISKET FLAT HALF BONELESS



BEEF CHUCK SEVEN BONE STEAK



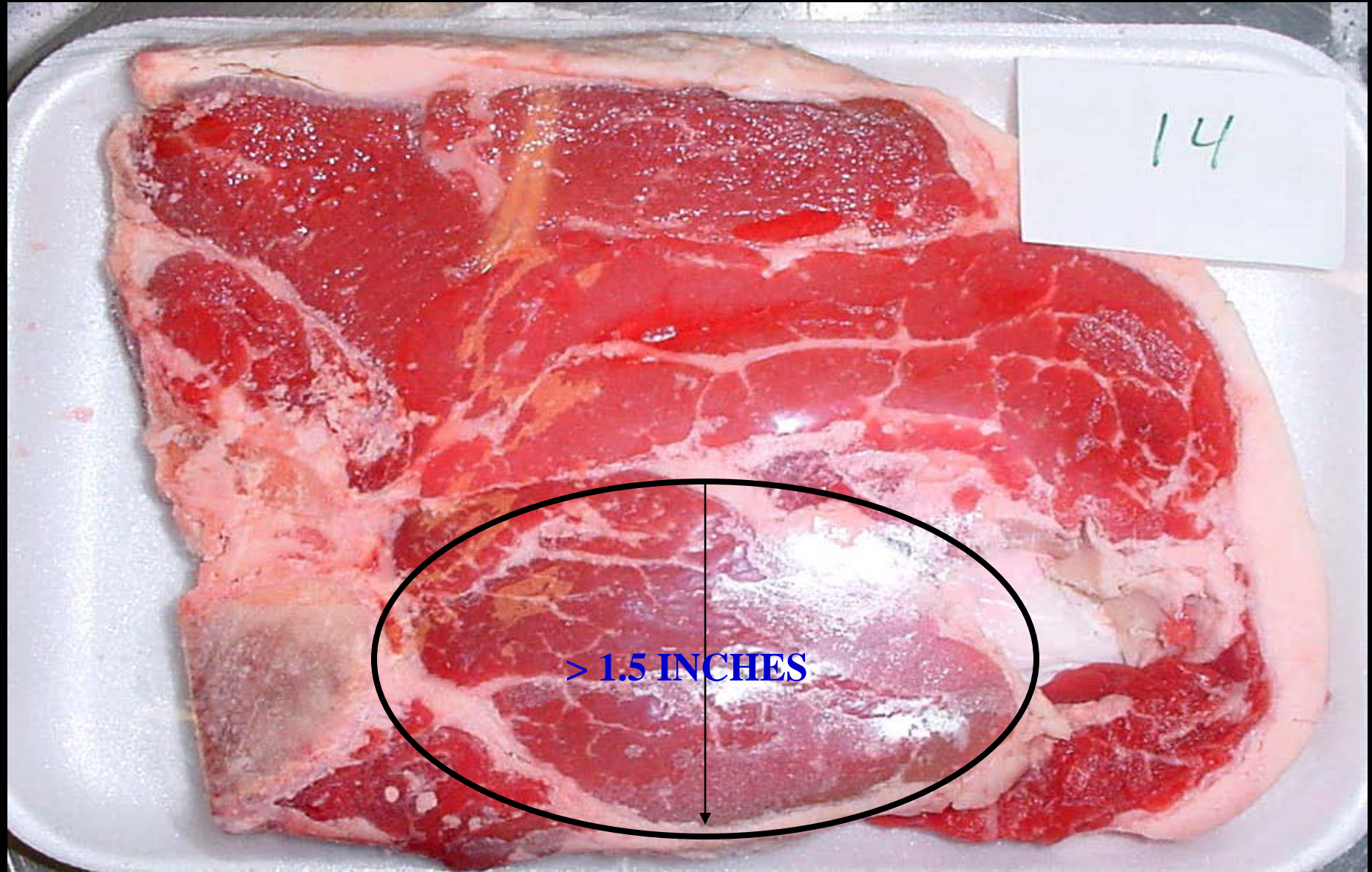
BEEF CHUCK BLADE STEAK



BEEF CROSS CUT SHANKS



BEEF LOIN PORTERHOUSE STEAK



BEEF LOIN TENDERLOIN STEAK



BEEF RIB RIBEYE STEAK



BEEF ROUND BOTTOM ROUND ROAST



BEEF ROUND EYE OF ROUND ROAST



BEEF PLATE SKIRT STEAK



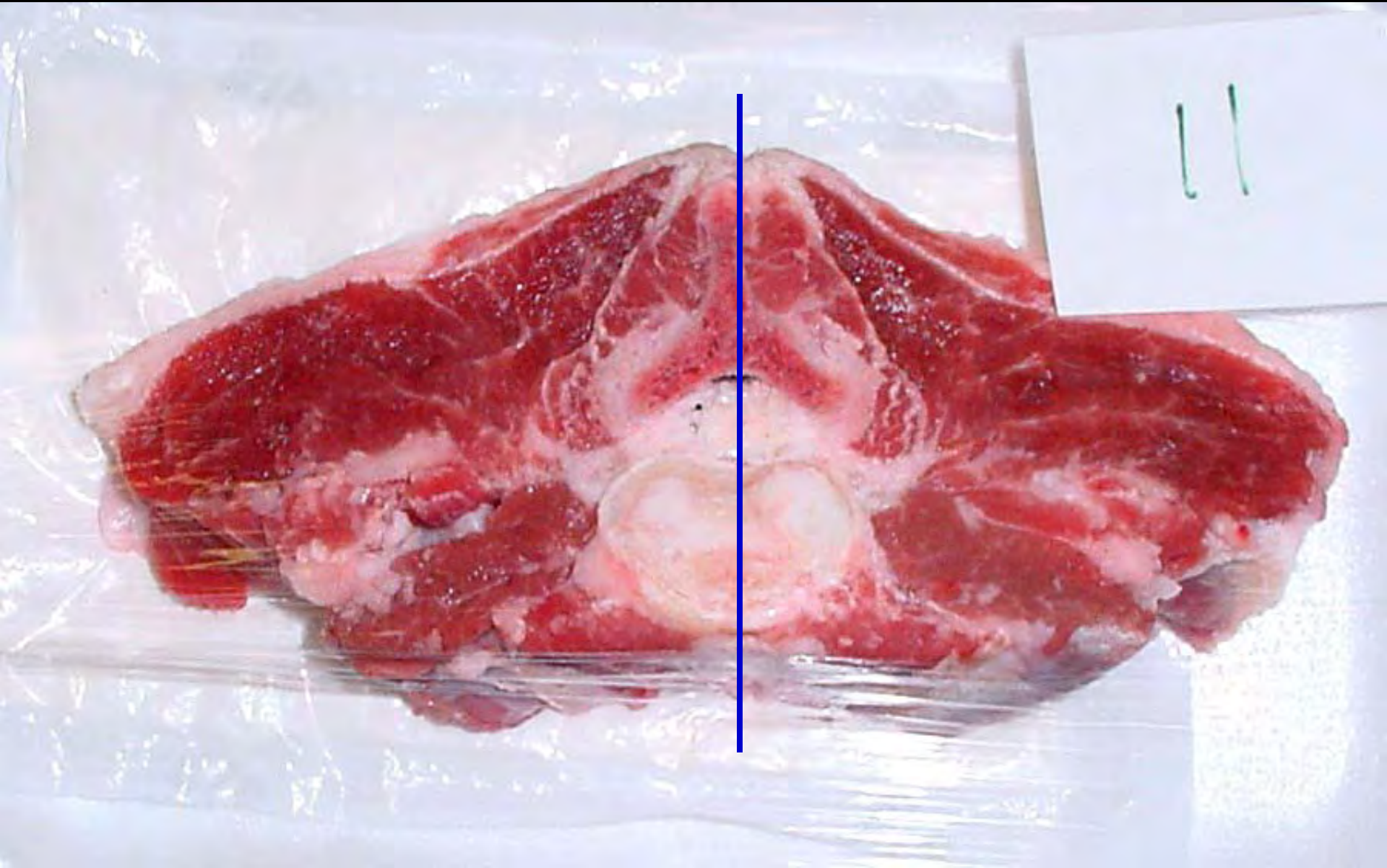
BEEF SWEETBREAD



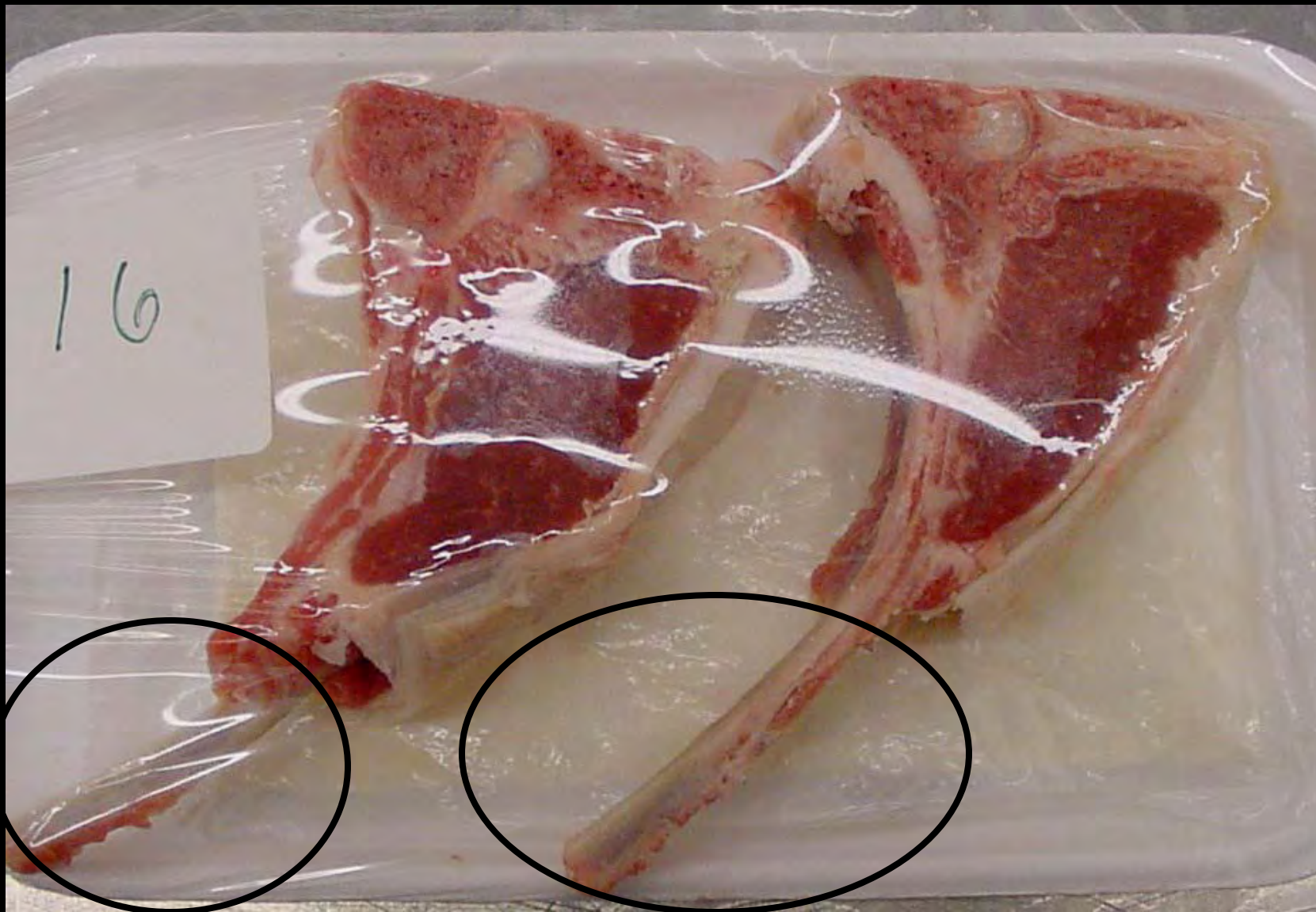
LAMB LEG, FRENCH STYLE



LAMB LOIN DOUBLE CHOP



LAMB RIB CHOP, FRENCH STYLE



LAMB BREAST RIBLETS



LAMB SHOULDER SQUARE CUT WHOLE



PORK SHOULDER ARM PICNIC



PORK SHOULDER ARM STEAK



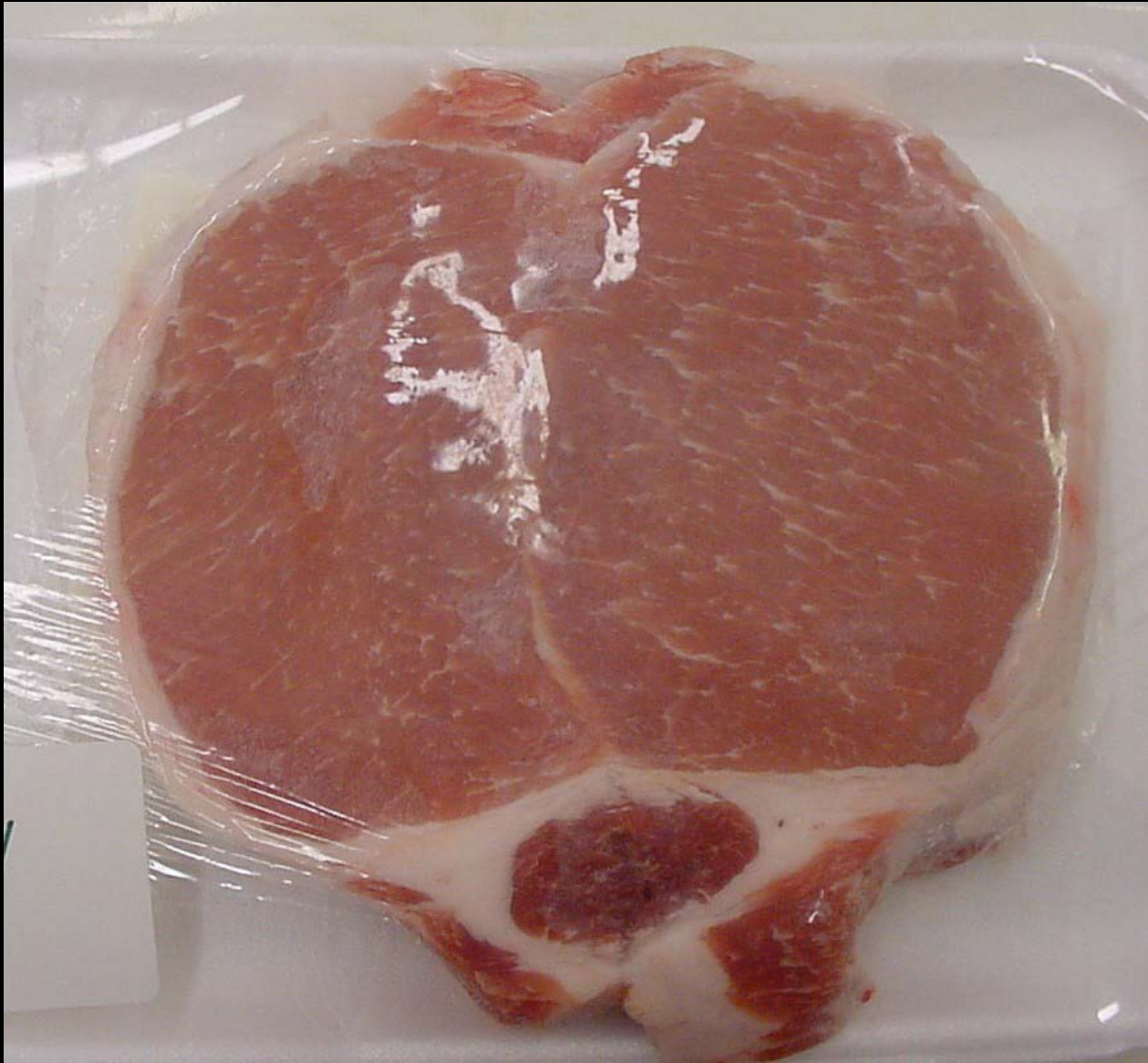
PORK BELLY FRESH SIDE



PORK LOIN BLADE CHOP



PORK LOIN DOUBLE CHOP



PORK LOIN TOP LOIN DOUBLE ROAST



PORK LOIN SIRLOIN CHOP

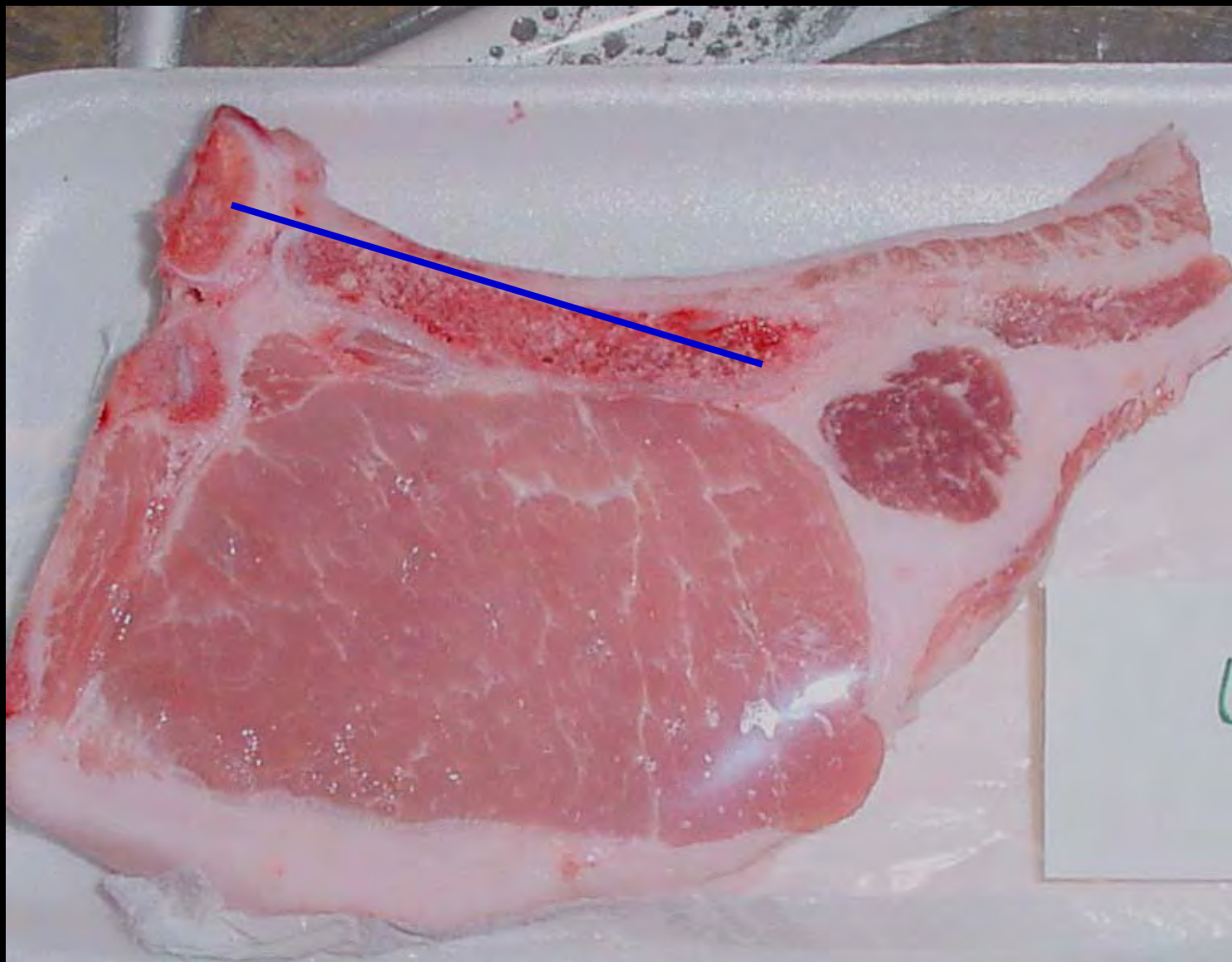


33

PORK LOIN TENDERLOIN



PORK LOIN RIB CHOP



PORK SHOULDER BLADE BOSTON ROAST



PORK SHOULDER BLADE STEAK



PORK SIDE SPARERIBS

