

Retail ID

2002

Larry Eubanks

Beef Chuck 7 Bone Steak



Beef Chuck Arm Pot Roast



Beef Chuck Blade Steak



Beef Round Bottom Round Roast



Beef Round Bottom Round Steak



Beef Round Tip Steak, Cap Off



Beef Shanks, Cross Cut



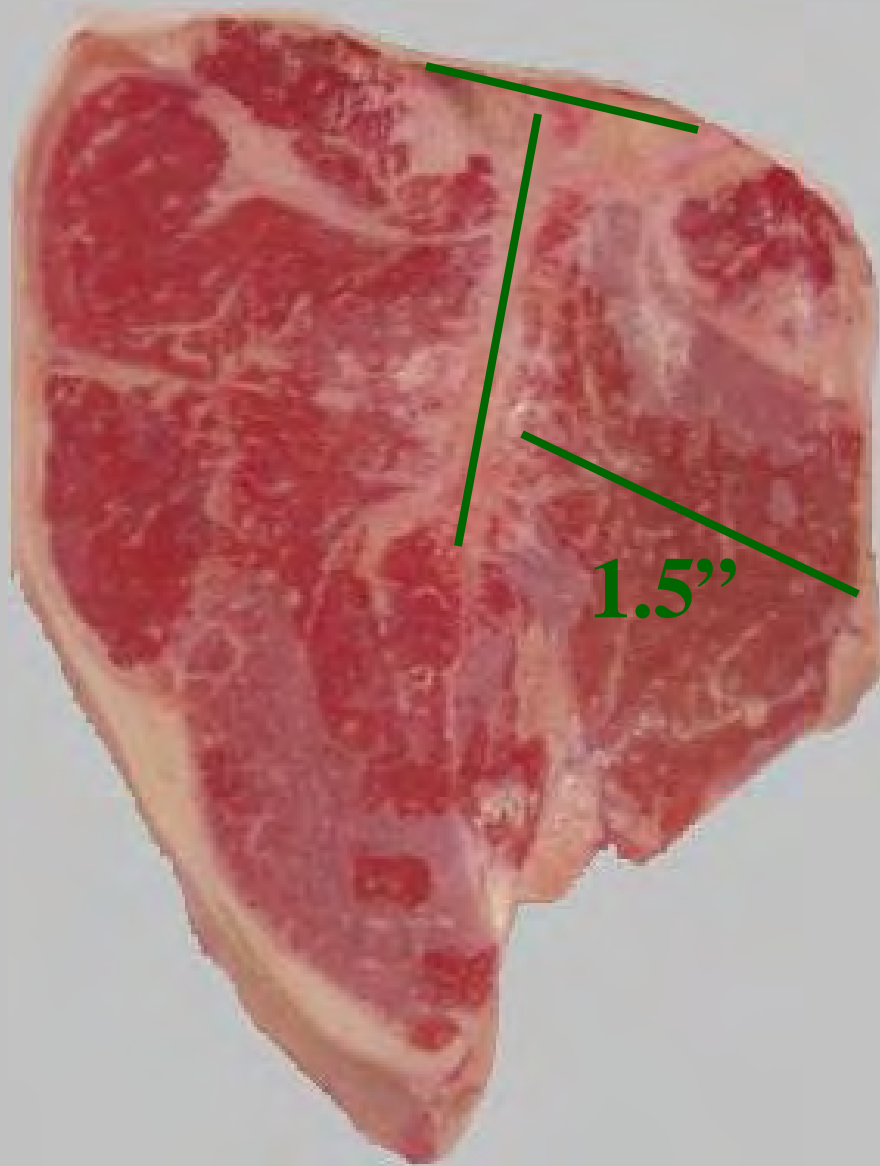
Beef Eye Of Round Steak



Beef Chuck, Blade Steak



Beef Loin Porterhouse Steak



Beef Ribeye Roast



Beef Ribeye Steak



Beef Loin Round Bone Sirloin



Beef Loin Top Loin Steak



Beef Loin Top Sirloin



Beef Flank Steak



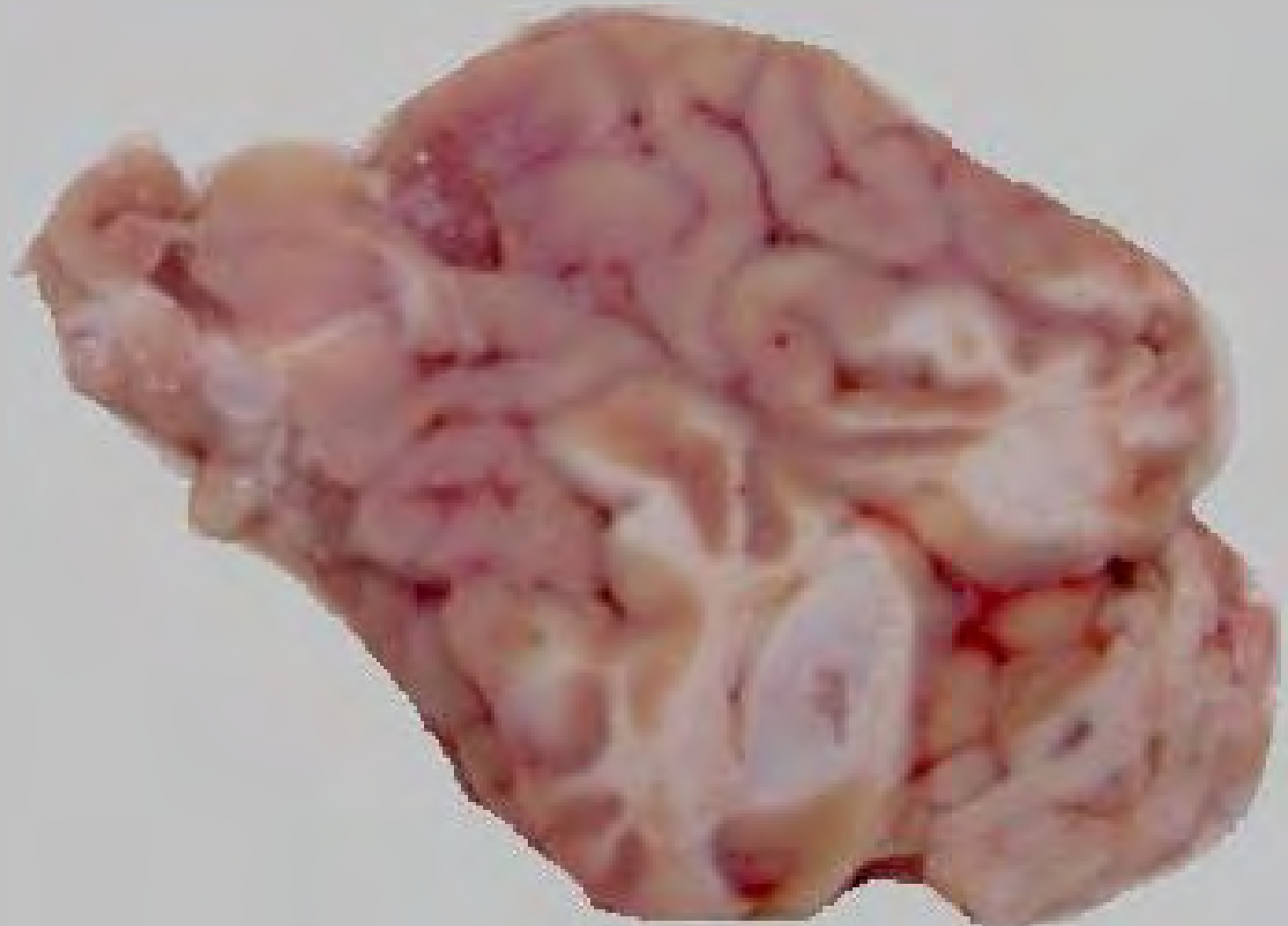
Beef for Stew (various)



Beef Loin Tenderloin Steak



Brains (variety)



Lamb Leg American Style



Lamb Shoulder Arm Chop



Pork Shoulder Arm Steak



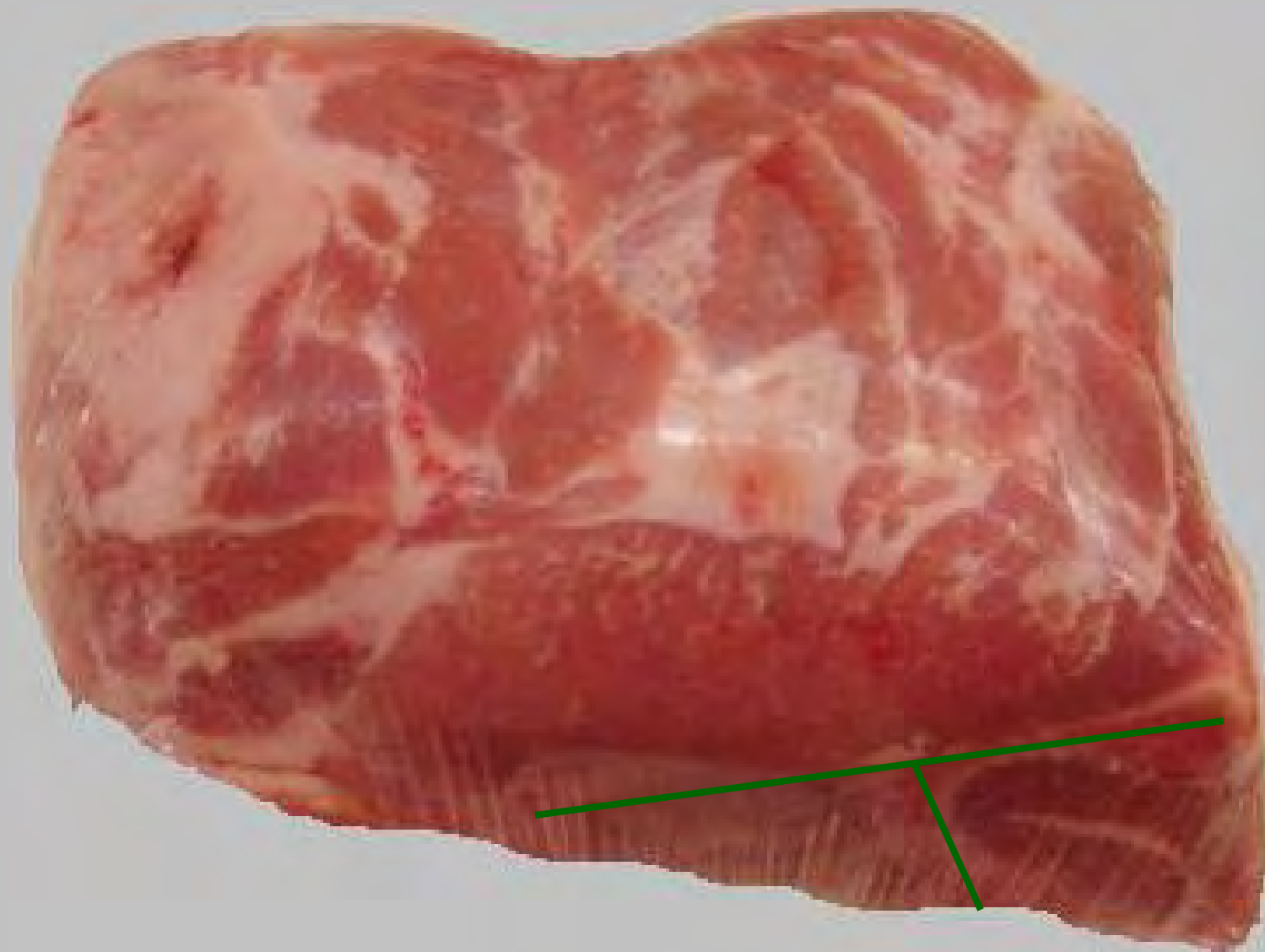
Pork Loin Backribs



Pork Shoulder Blade Steak



Pork Shoulder Blade Boston Roast



Pork Ham Center Slice



Pork Loin Rib Chop, Smoked & Cured



Pork Loin Double Loin Boneless



Pork Leg Fresh Hocks



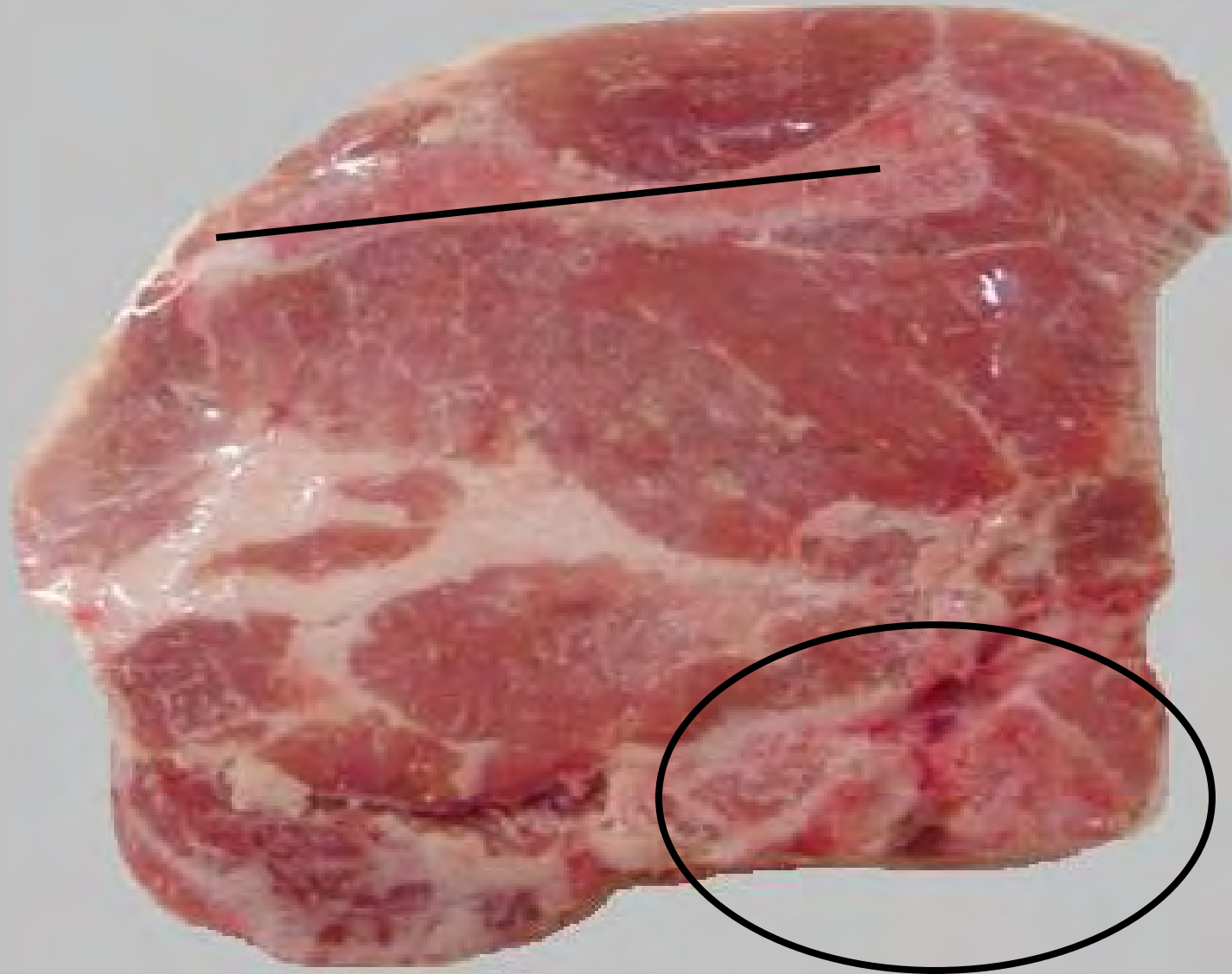
Pork Fresh Side



Pork Loin Tenderloin



Pork Loin Blade Chop



Pork Heart (variety)



Pork Loin Sirloin Roast



Pork Slab Bacon



Pork Stew



Smoked Hocks



Pork Spare Ribs



Pork Loin Butterfly Chop



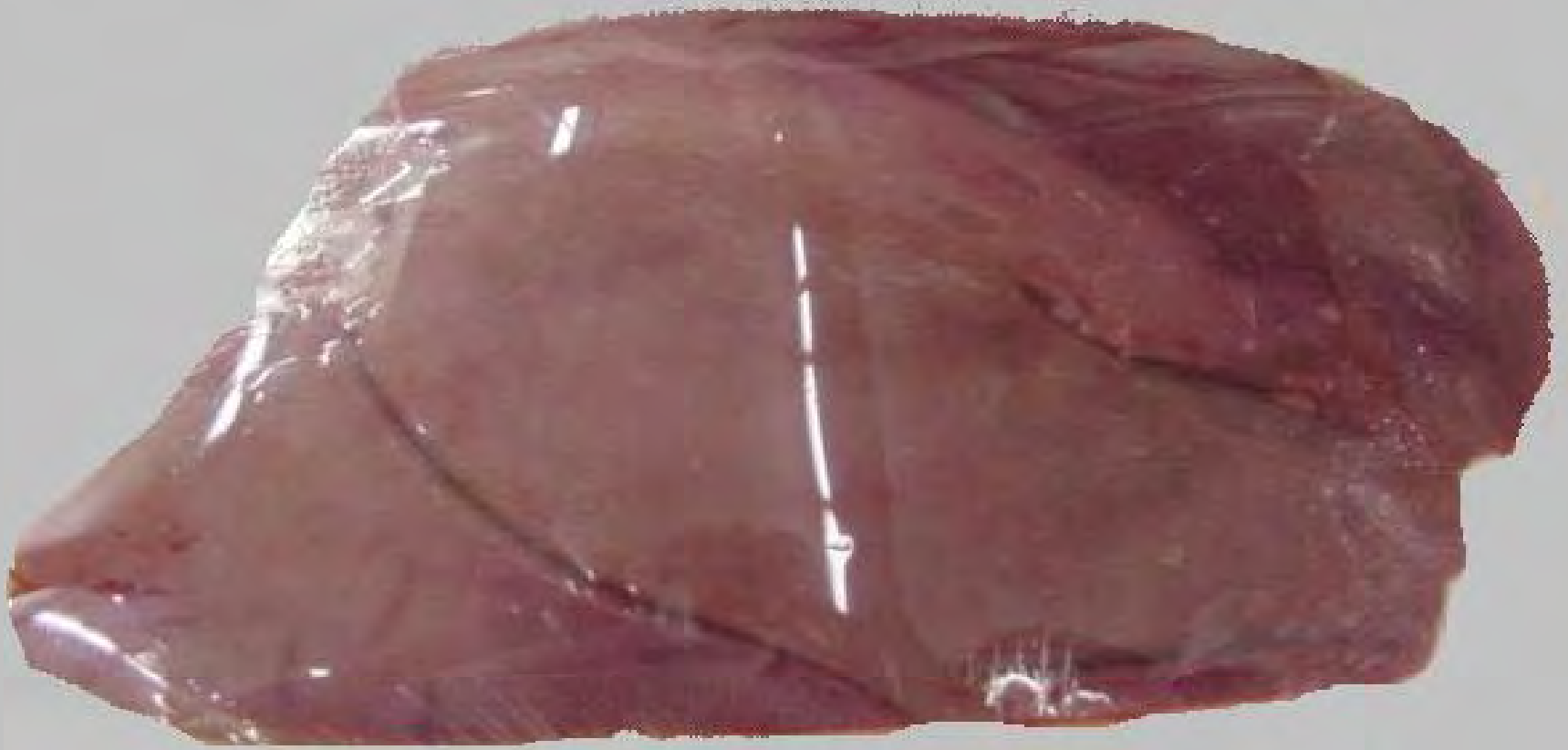
Pork Loin Center Loin Roast



Pork Kidney (variety)



Pork Liver (variety)



Pork Loin Chop



Pork Loin Rib Chop



Pork Loin Rib Roast



Pork Loin Sirloin Chop



Pork Tongue (variety)

