

2011

Meat Contest

Pork Loin Back Ribs

P F 05 D/M



Beef Chuck Arm Roast

B C 03 M



Beef Loin Tenderloin Steak

B F 56 D



Beef Round Bottom Round Steak

B F 56 D



Beef Brisket Point Half

Not on 2012 ID List



Lamb Shoulder Arm Chop

LJ 65 D/M



Beef Round Tip Roast Cap Off B I 36 D/M



Pork Loin Butterfly Chop

P F 68 D



Pork Loin Center Loin Roast

P F 11 D



Beef Chuck Eye Roast, Bnls B C 13 D/M



Beef Round Eye Round Steak

B I 46 D/M



Beef Cross Cut Shanks

Not on 2012 ID List



Pork Shoulder Arm Steak

P J 41 D/M



Smoked Ham Center Slice

P E 90 D



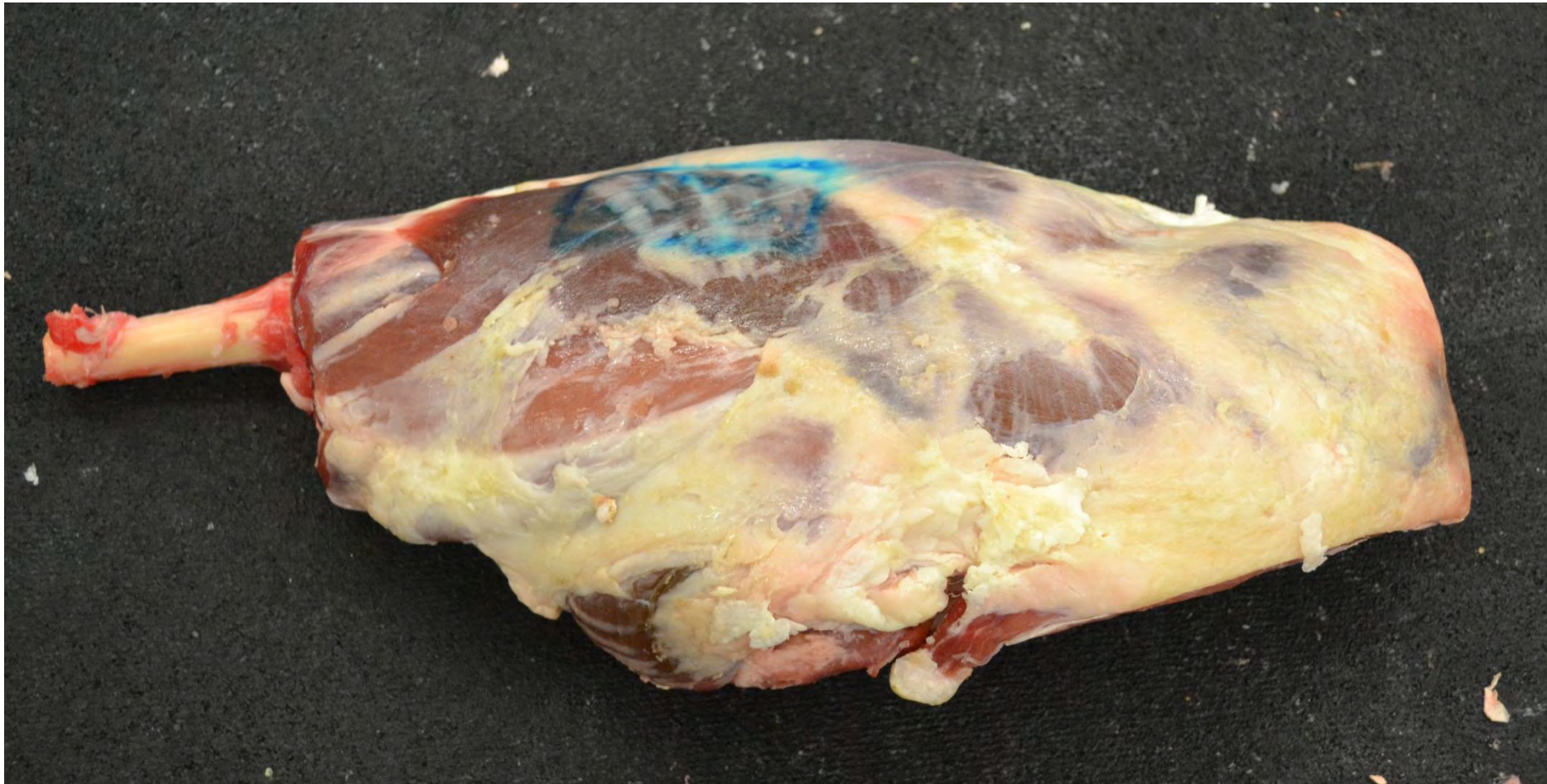
Beef Loin Top Loin Steak Bnls

B F 60 D



Lamb Leg French Style

LE 16 D



Beef Chuck Blade Roast

B C 06 M



Pork Shoulder Blade Steak

P J 42 D/M



Beef Flank Steak

B D 47 D/M



Pork Fresh Hocks

P N 86 M



Lamb Shoulder Blade Chop

LJ 66 D/M



Pork Loin Sirloin Roast

P F 30 D



Lamb Leg Center Slice

LE 44 D



Beef Loin Top Loin Steak

B F 59 D



Lamb Neck Slices

Not on 2012 ID List



Beef Plate Skirt Steak

B G 54 D/M



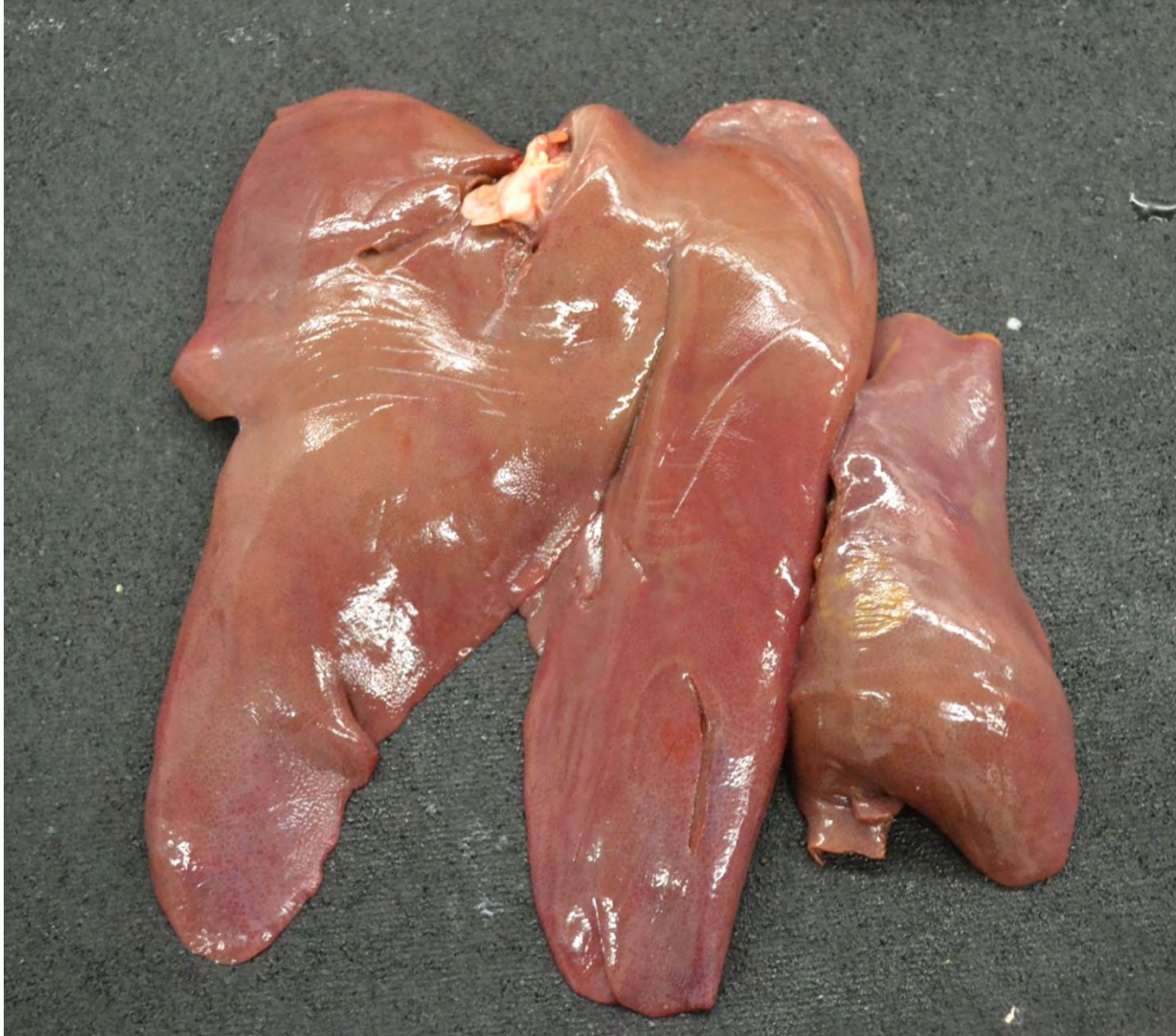
Pork Loin Blade Chop

P F 66 D/M



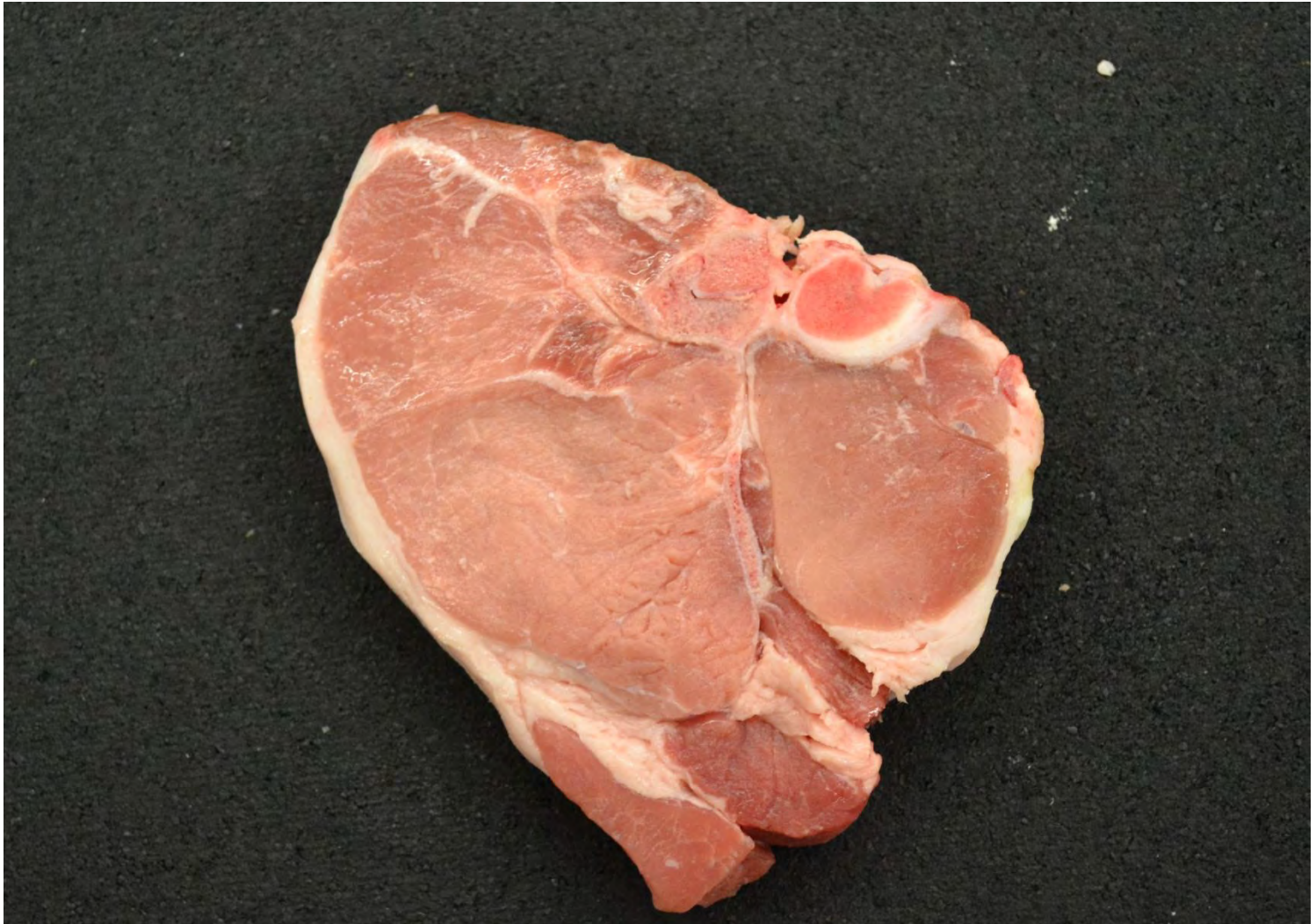
Pork Liver

P M 78 D/M



Pork Loin Chop

P F 70 D



Pork Loin Sirloin Chop

P F 73 D



Pork Loin Tenderloin

P F 34 D



Pork Tongue

P M 80 D/M



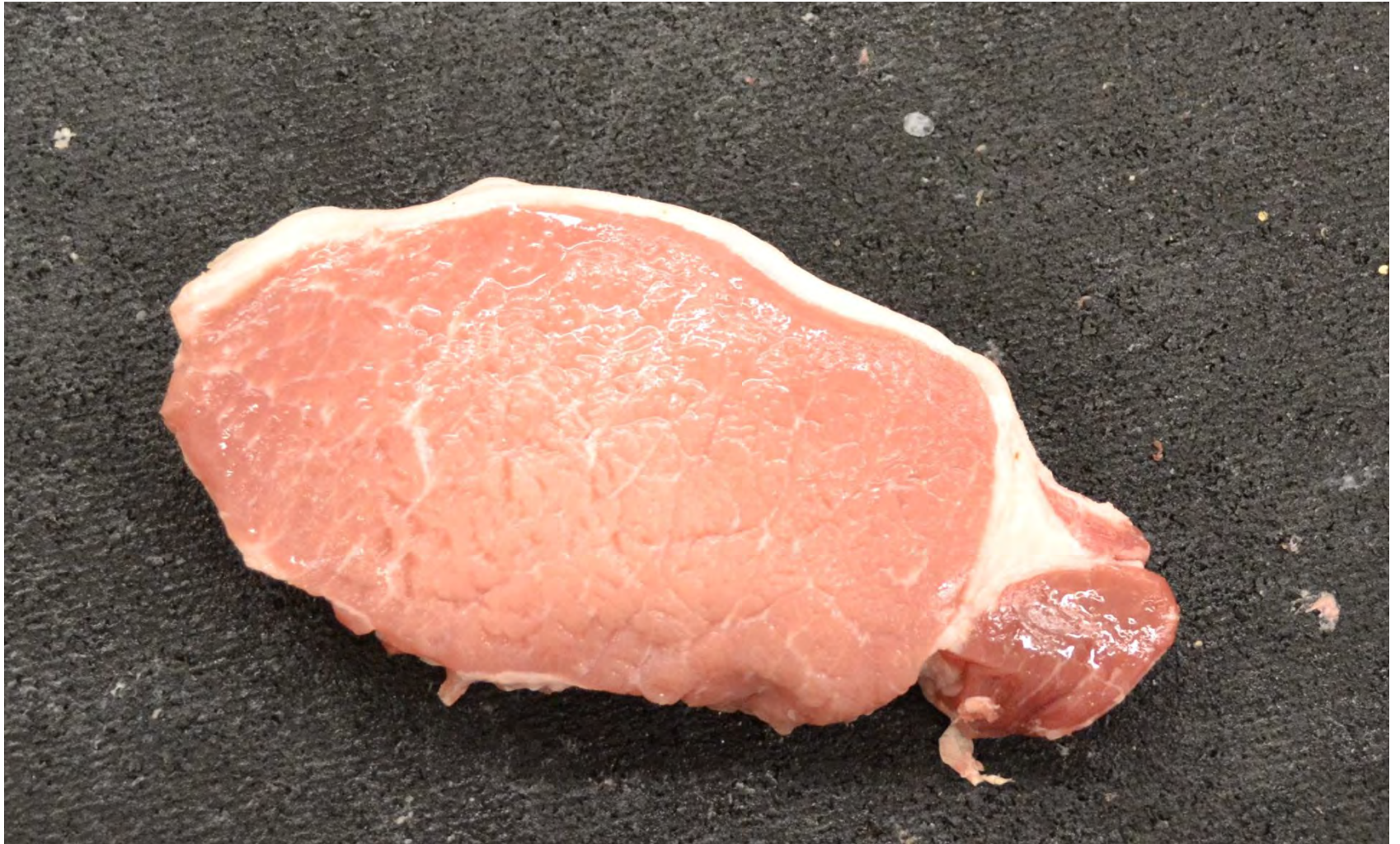
Beef Short Ribs

B G 28 M



Pork Loin Top Loin Chop Bnls

P F 75 D



Beef Loin Porterhouse Steak

B F 49 D



Beef Chuck Seven Bone Roast

B C 26 M



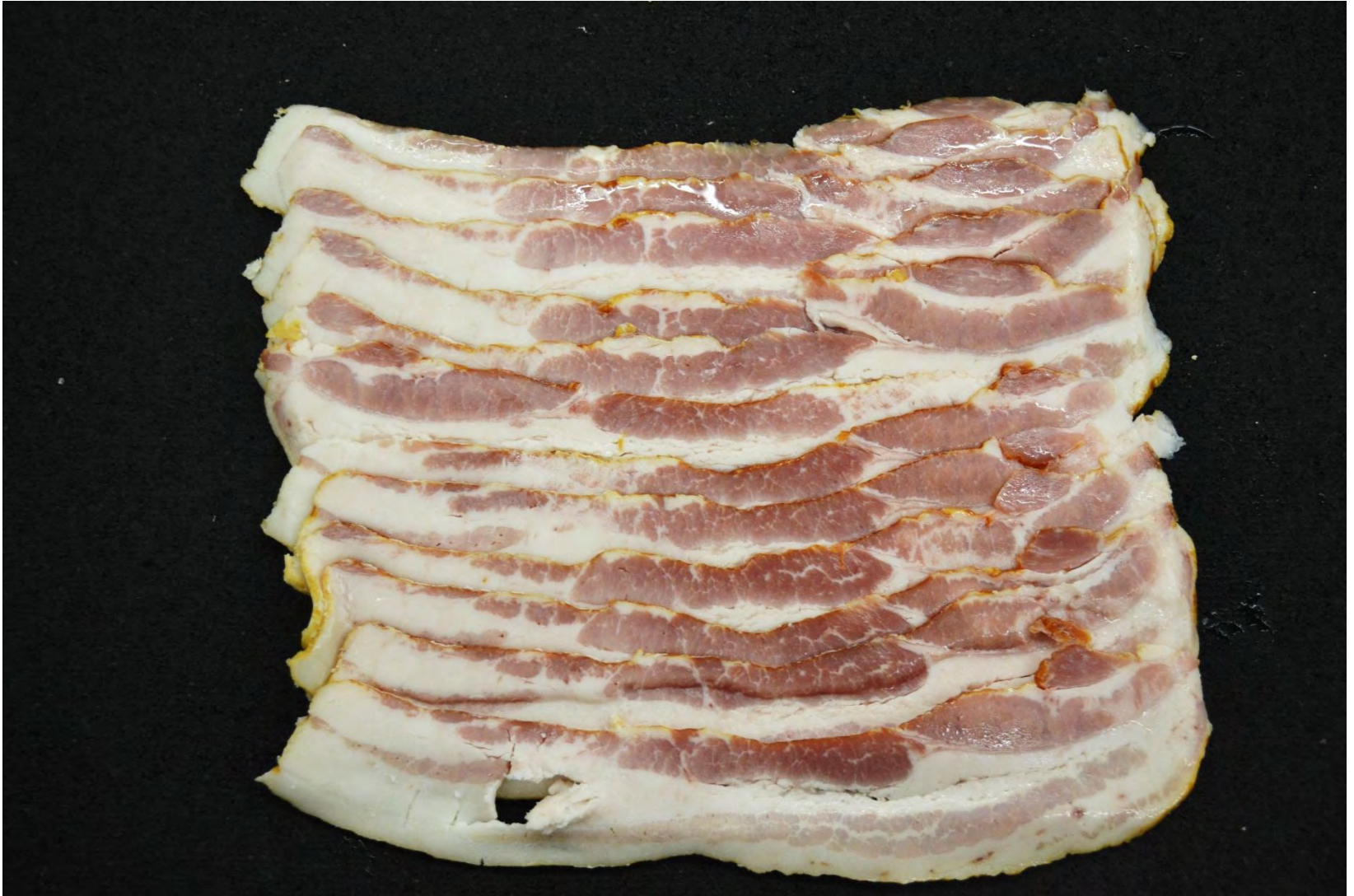
Beef Loin Tenderloin Steak

B F 56 D



Sliced Bacon

P K 99 D



Beef Rib Steak Small End

Not on 2012 ID List



Smoked Hocks

P N 92 M



Lamb Shoulder Square Cut

LJ 33 D/M



Beef for Stew

B N 82 M



Beef Round Tip Steak Cap Off B I 57 D



Beef Loin Top Loin Steak Bnls

B F 64 D



Beef Loin Top Sirloin Steak Bnls

B F 62 D



Beef Sweetbread

Not on 2012 ID List

