

2012 ID

# Beef Chuck Arm Pot-Roast Bnls

## Moist - BC04M



# Pork Loin Back Ribs

## Dry/Moist – PF05d/M



# Beef Chuck Mock Tender Roast

## Moist – BC20M



# Beef Chuck Arm Pot-Roast Moist – BC03M



# Beef Variety Kidney Dry/Moist BM77D/M



# Beef Loin Tenderloin Steak Dry – BF56D



# Beef Loin Top Loin Steak Bnls Dry – BF60D





# Beef Round Bottom Round Steak Moist – BI43M



# Pork Loin Butterflied Chops, Bnls. Dry – PF68D



# Beef Chuck Eye Roast, Bnls – Dry/Moist – BC13D/M



# Beef Chuck Eye Steak, Bnls Dry – BC45D



# Beef Chuck Shoulder Post Roast Bnls Dry/Moist – BC29D/M



# Beef Loin Top Sirloin Cap Steak, Bnls Dry – BF64D



# Pork Loin Country Style Ribs Dry/Moist – PF69D/M



# Beef Ribeye Steak, Lip-On Dry – BH50D





# Beef Round Eye Round Roast Dry/Moist - BI14D/M



# Beef Round Eye Round Steak Dry/Moist – BI46D/M



# Beef Flank Flank Steak Dry/Moist – BD47DM



# Beef Chuck Top Blade Steak (Flat Iron) Dry – BC58D



# Lamb Shoulder Arm chops

## Dry/Moist – LJ65D/M



# Lamb Shoulder Blade Chops Dry/Moist – LJ66D/M



# Lamb Various Shank oist – LN88M



# Lamb Leg Sirloin Chops Dry – LE73D





# Lamb Shoulder Square Cut Dry/Moist – LJ33D/M



# Beef Chuck Petite Tender Dry – BC21D



# Pork Loin Blade Chops, Bnls. Dry/Moist – PF67D/M



# Pork Loin Blade Chops Dry/Moist – PF66D/M



# Pork Loin Center Rib Roast

## Dry – PF12D



# Pork Variety Heart

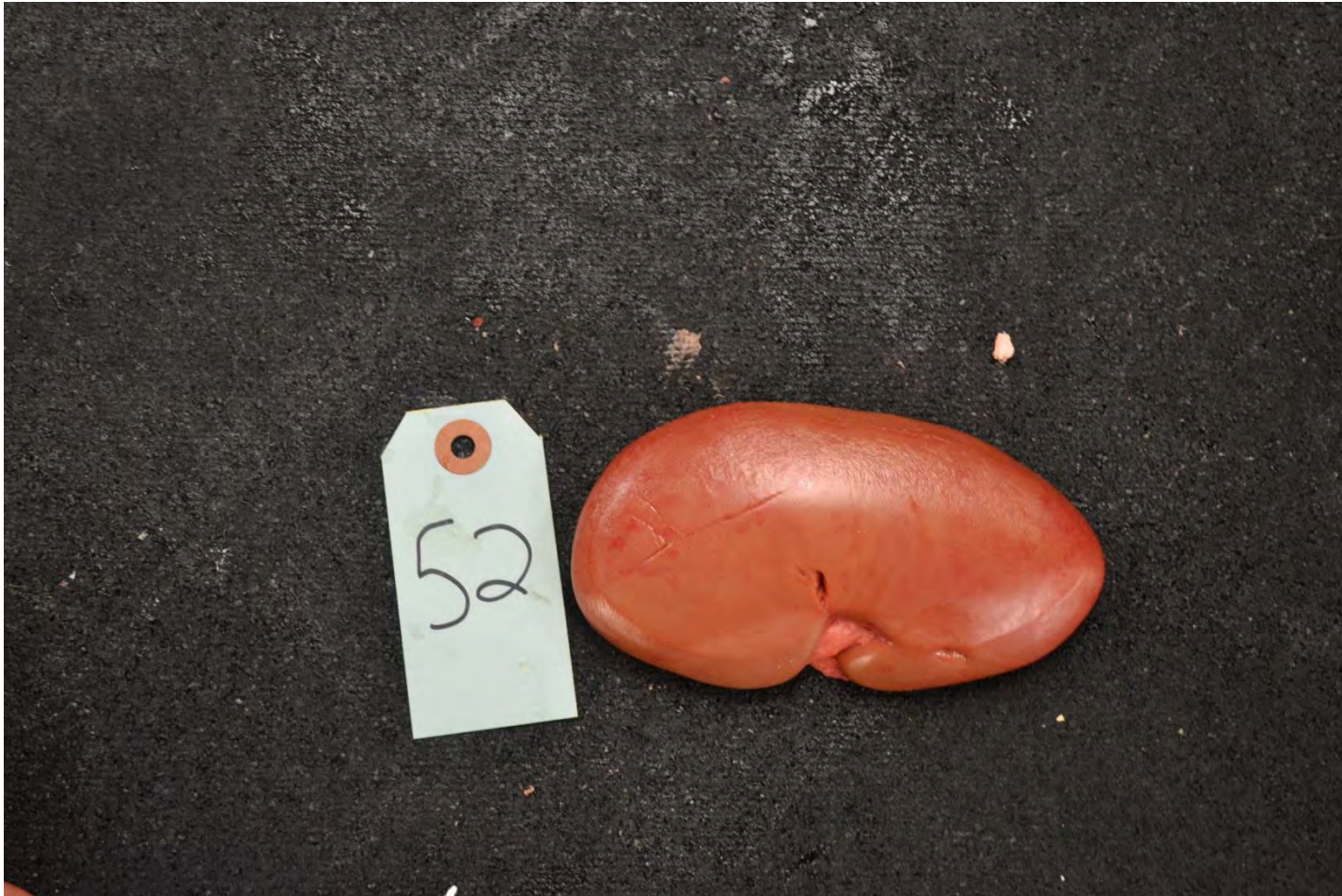
## Dry/Moist – PM76D/M



# Pork Ham/Leg Top Roast, Bnls Dry - PE38D



# Pork Variety Kidney Dry/Moist PM77D/M





# Pork Ham/Leg Tip Roast, Bnls. Dry – PE35D



# Pork Variety Liver Dry/Moist – PM78D/M



# Pork Loin Loin Chops Dry – PF70D



# Pork Loin Roast, Bnls Dry – PF37D



# Pork Loin Rib Chops Dry – PF71D



# Pork Loin Sirloin Chops

## Dry – PF73D



# Pork Loin Sirloin Cutlets

## Dry – PF53D



# Pork Loin Sirloin Roast Dry – PF30D





# Pork Loin Tenderloin, Whole Dry – PF34D



# Pork Loin Top Loin Chop Dry – PF74D

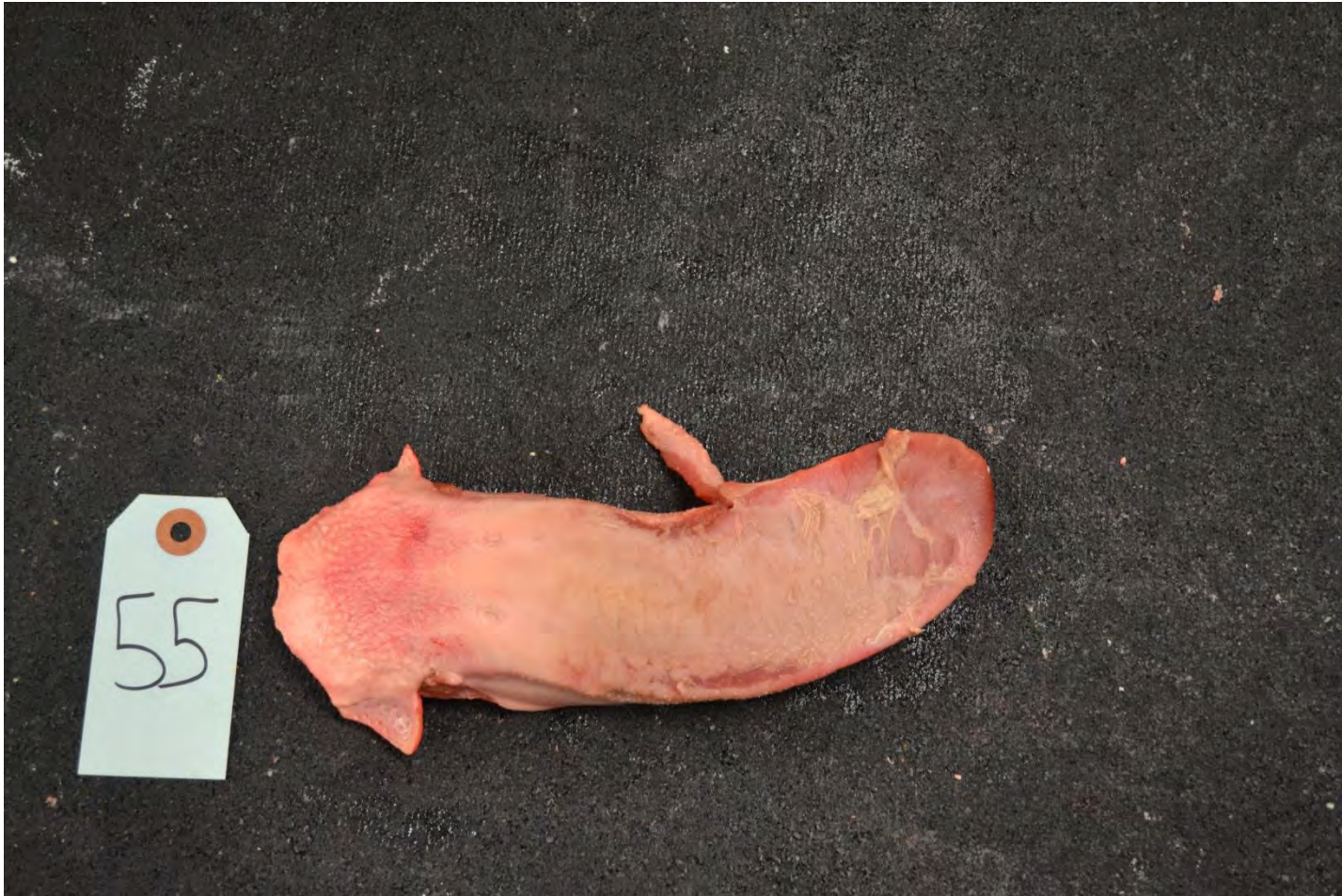


# Pork Loin Top Loin Chops, Bnls. Dry – PF75D



# Pork Variety Tongue

## Dry/Moist – PM80D/M



# Beef Loin Porterhouse Steak Dry – BF49D



# Beef Rib Rib Roast

## Dry – BH22D



# Beef Chuck Arm Pot-Roast Bnls Moist - BC04M



# Beef Plate Skirt Steak, Bnls Dry/Moist – BG54D/M

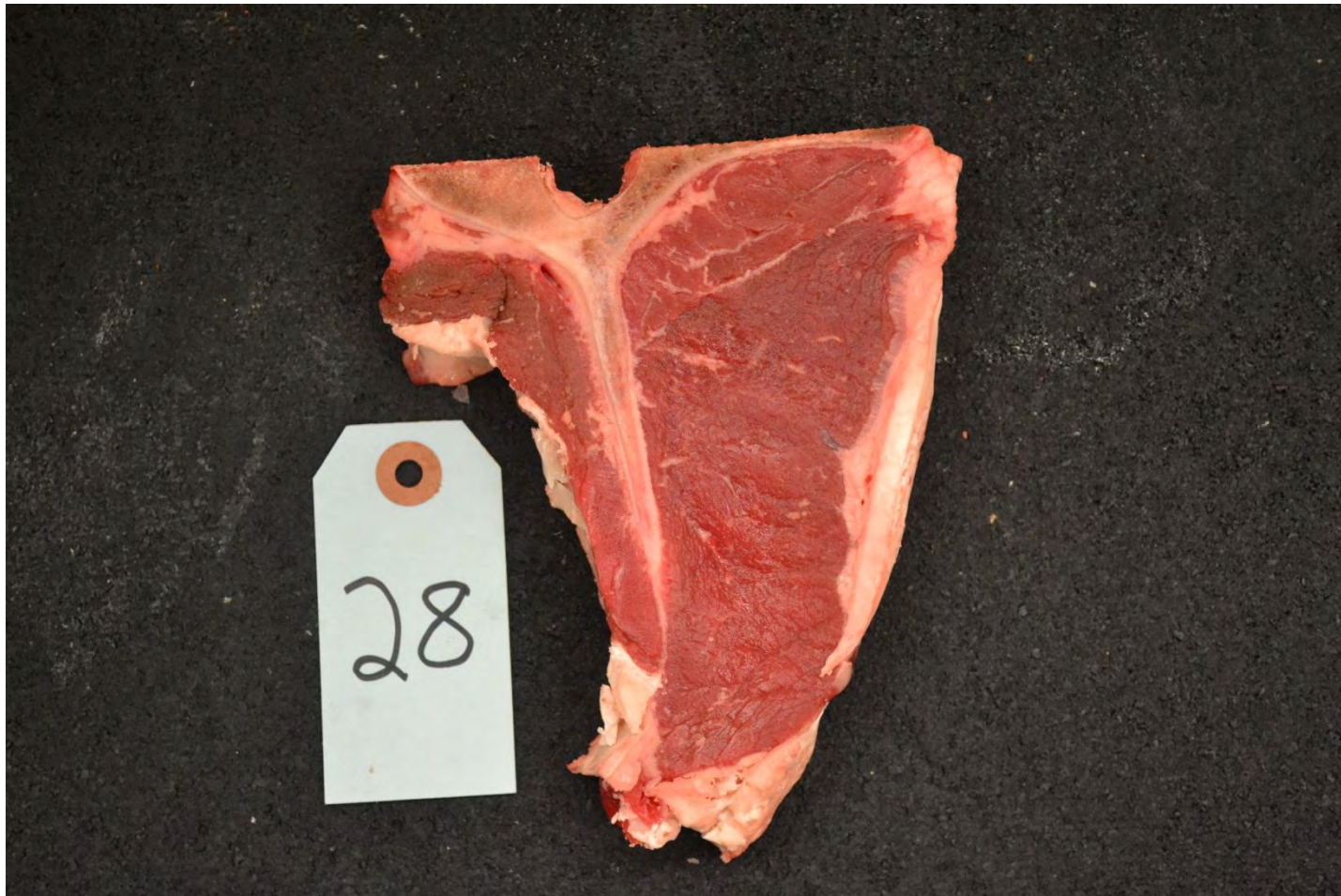




# Beef Plate Skirt Steak, Bnls Dry/Moist – BG54D/M



# Beef Loin T-Bone Steak Dry – BF55D



# Beef Round Tip Steak – Cap Off Dry – BI57D



# Beef Loin Top Loin Steak Dry – BF59D



# Beef Round Top Round Steak Dry – BI61D



# Beef Loin Top Sirloin Steak, Bnls Cap Off Dry – BF63D



# Beef Loin Tri Tip Roast Dry – BF40D

